

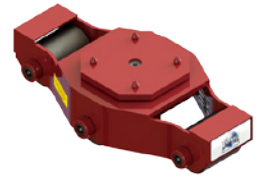
# PARTS BREAKDOWN SHEET



PRODUCTS THAT MOVE THE WORLD

## UMS-8 » 4 TON CAPACITY

Part Number	Qty.	Part Description
SR-00325	2	3.25" Ø Steel Roller
SR-00350	2	3.50" Ø Steel Roller
SA-01050	1	10.50" L x 1.00 Ø Standard Axle
SA-00600	2	6.00" L x 1.00 Ø Standard Axle
H-00SBS	4	Standard Bearing Set - 15 Needle Bearings
H-000SW	8	Standard Thrust Washer
H-00CPS	3	Standard Cone Point Set Screw
H-00BDT	3	Standard Frame Boss - Drilled & Tapped
H-00BPL	3	Standard Frame Boss - Non-Tapped
H-000SC	4	Standard Cleat - Weld-In
H-00LSP	1	Large Swivel Plate
H-00LFP	1	Large Friction Plate
H-FCS-00075	1	Flat Head Socket Cap Screw - 3/4"



## UMS-8-P » 4 TON CAPACITY

Part Number	Qty.	Part Description
PR-00325	2	3.25" Ø Non-Marking Polyurethane Coated Roller
PR-00350	2	3.50" Ø Non-Marking Polyurethane Coated Roller
SA-01050	1	10.50" L x 1.00 Ø Standard Axle
SA-00600	2	6.00" L x 1.00 Ø Standard Axle
H-00SBS	4	Standard Bearing Set - 15 Needle Bearings
H-000SW	8	Standard Thrust Washer
H-00CPS	3	Standard Cone Point Set Screw
H-00BDT	3	Standard Frame Boss - Drilled & Tapped
H-00BPL	3	Standard Frame Boss - Non-Tapped
H-000SC	4	Standard Cleat - Weld-In
H-00LSP	1	Large Swivel Plate
H-00LFP	1	Large Friction Plate
H-FCS-00075	1	Flat Head Socket Cap Screw - 3/4"



PARTS BREAKDOWN SHEET



PRODUCTS THAT MOVE THE WORLD

### Phone & Fax

Phone: +1 262.502.0333  
 Fax: +1 262.502.0260  
 Toll Free: +1 800.558.0577

### Website & E-Mail

[www.hevihaul.com](http://www.hevihaul.com)  
[sales@hevihaul.com](mailto:sales@hevihaul.com)

### Social Media

