

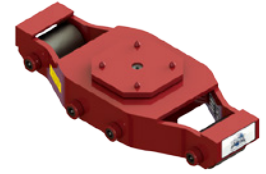
# PARTS BREAKDOWN SHEET



PRODUCTS THAT MOVE THE WORLD

## UMS-HD-50 » 25 TON CAPACITY

Part Number	Qty.	Part Description
SR-00325	2	3.25" Ø Steel Roller
SR-00350	4	3.50" Ø Steel Roller
SA-01100	2	11.00" L x 1.00 Ø Standard Axle
SA-00650	2	6.50" L x 1.00 Ø Standard Axle
H-00SBS	6	Standard Bearing Set - 15 Needle Bearings
H-000SW	12	Standard Thrust Washer
H-00CPS	4	Standard Cone Point Set Screw
H-00BDT	4	Standard Frame Boss - Drilled & Tapped
H-00BPL	4	Standard Frame Boss - Non-Tapped
H-000SC	8	Standard Cleat - Weld-In
H-00LSP	1	Large Swivel Plate
H-00LFP	1	Large Friction Plate
H-FCS-00100	1	Flat Head Socket Cap Screw - 1"



## UMS-HD-50-P » 20 TON CAPACITY

Part Number	Qty.	Part Description
PR-00325	2	3.25" Ø Non-Marking Polyurethane Coated Roller
PR-00350	4	3.50" Ø Non-Marking Polyurethane Coated Roller
SA-01100	2	11.00" L x 1.00 Ø Standard Axle
SA-00650	2	6.50" L x 1.00 Ø Standard Axle
H-00SBS	6	Standard Bearing Set - 15 Needle Bearings
H-000SW	12	Standard Thrust Washer
H-00CPS	4	Standard Cone Point Set Screw
H-00BDT	4	Standard Frame Boss - Drilled & Tapped
H-00BPL	4	Standard Frame Boss - Non-Tapped
H-000SC	8	Standard Cleat - Weld-In
H-00LSP	1	Large Swivel Plate
H-00LFP	1	Large Friction Plate
H-FCS-00100	1	Flat Head Socket Cap Screw - 1"



PARTS BREAKDOWN SHEET



PRODUCTS THAT MOVE THE WORLD

### Phone & Fax

Phone: +1 262.502.0333  
 Fax: +1 262.502.0260  
 Toll Free: +1 800.558.0577

### Website & E-Mail

[www.hevihaul.com](http://www.hevihaul.com)  
[sales@hevihaul.com](mailto:sales@hevihaul.com)

### Social Media

