

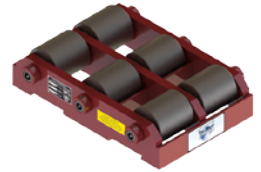
PARTS BREAKDOWN SHEET



PRODUCTS THAT MOVE THE WORLD

ST-1060 » 30 TON CAPACITY

Part Number	Qty.	Part Description
SR-00325	6	3.25" Ø Steel Roller
HA-01175	3	11.75" L x 1.00 Ø Hardened Axle
H-00SBS	6	Standard Bearing Set - 15 Needle Bearings
H-000SW	12	Standard Thrust Washer
H-00CPS	3	Standard Cone Point Set Screw
H-00BDT	3	Standard Frame Boss - Drilled & Tapped
H-00BPL	3	Standard Frame Boss - Non-Tapped
H-000SC	12	Standard Cleat - Weld-In



ST-1060-P » 30 TON CAPACITY

Part Number	Qty.	Part Description
PR-00325	6	3.25" Ø Non-Marking Polyurethane Coated Roller
HA-01175	3	11.75" L x 1.00 Ø Hardened Axle
H-00SBS	6	Standard Bearing Set - 15 Needle Bearings
H-000SW	12	Standard Thrust Washer
H-00CPS	3	Standard Cone Point Set Screw
H-00BDT	3	Standard Frame Boss - Drilled & Tapped
H-00BPL	3	Standard Frame Boss - Non-Tapped
H-000SC	12	Standard Cleat - Weld-In



PARTS BREAKDOWN SHEET



Phone & Fax

Phone: +1 262.502.0333
 Fax: +1 262.502.0260
 Toll Free: +1 800.558.0577

Website & E-Mail

www.hevihaul.com
sales@hevihaul.com

Social Media



PRODUCTS THAT MOVE THE WORLD