

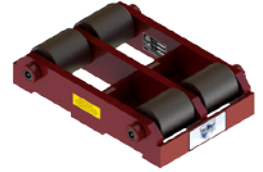
PARTS BREAKDOWN SHEET



PRODUCTS THAT MOVE THE WORLD

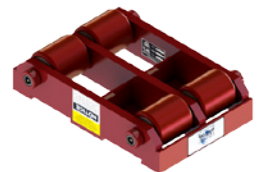
ST-1040 » 20 TON CAPACITY

Part Number	Qty.	Part Description
SR-00325	4	3.25" Ø Steel Roller
HA-01175	2	11.75" L x 1.00 Ø Hardened Axle
H-00SBS	4	Standard Bearing Set - 15 Needle Bearings
H-000SW	8	Standard Thrust Washer
H-00CPS	2	Standard Cone Point Set Screw
H-00BDT	2	Standard Frame Boss - Drilled & Tapped
H-00BPL	2	Standard Frame Boss - Non-Tapped
H-000SC	9	Standard Cleat - Weld-In



ST-1040-P » 20 TON CAPACITY

Part Number	Qty.	Part Description
PR-00325	4	3.25" Ø Non-Marking Polyurethane Coated Roller
HA-01175	2	11.75" L x 1.00 Ø Hardened Axle
H-00SBS	4	Standard Bearing Set - 15 Needle Bearings
H-000SW	8	Standard Thrust Washer
H-00CPS	2	Standard Cone Point Set Screw
H-00BDT	2	Standard Frame Boss - Drilled & Tapped
H-00BPL	2	Standard Frame Boss - Non-Tapped
H-000SC	9	Standard Cleat - Weld-In



PARTS BREAKDOWN SHEET



Phone & Fax

Phone: +1 262.502.0333
 Fax: +1 262.502.0260
 Toll Free: +1 800.558.0577

Website & E-Mail

www.hevihaul.com
sales@hevihaul.com

Social Media



PRODUCTS THAT MOVE THE WORLD