

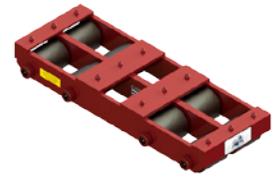
PARTS BREAKDOWN SHEET



PRODUCTS THAT MOVE THE WORLD

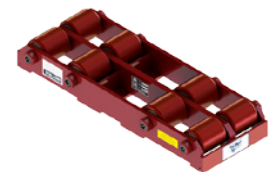
SD-50 » 25 TON CAPACITY

Part Number	Qty.	Part Description
SR-00325	4	3.25" Ø Steel Roller
SR-00350	4	3.50" Ø Steel Roller
HA-01125	4	11.25" L x 1.00 Ø Hardened Axle
H-00SBS	8	Standard Bearing Set - 15 Needle Bearings
H-000SW	16	Standard Thrust Washer
H-00CPS	4	Standard Cone Point Set Screw
H-00BDT	4	Standard Frame Boss - Drilled & Tapped
H-00BPL	4	Standard Frame Boss - Non-Tapped
H-000SC	12	Standard Cleat - Weld-In



SD-50-P » 20 TON CAPACITY

Part Number	Qty.	Part Description
PR-00325	4	3.25" Ø Non-Marking Polyurethane Coated Roller
PR-00350	4	3.50" Ø Non-Marking Polyurethane Coated Roller
HA-01125	4	11.25" L x 1.00 Ø Hardened Axle
H-00SBS	8	Standard Bearing Set - 15 Needle Bearings
H-000SW	16	Standard Thrust Washer
H-00CPS	4	Standard Cone Point Set Screw
H-00BDT	4	Standard Frame Boss - Drilled & Tapped
H-00BPL	4	Standard Frame Boss - Non-Tapped
H-000SC	12	Standard Cleat - Weld-In



PARTS BREAKDOWN SHEET



PRODUCTS THAT MOVE THE WORLD

Phone & Fax

Phone: +1 262.502.0333
 Fax: +1 262.502.0260
 Toll Free: +1 800.558.0577

Website & E-Mail

www.hevihaul.com
sales@hevihaul.com

Social Media

