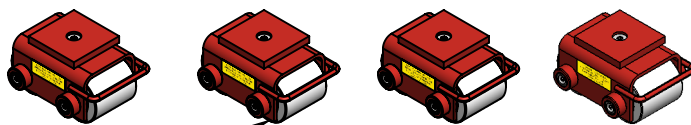
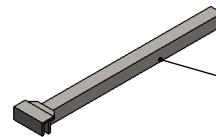


Model Number » CS-20K
Capacity » 10 Tons Per Kit or 2.5 Tons Each
Kit Includes » (1) Steel Box, (4) CS-5 Skates and (1) Handle
Weight » 127 lbs
Paint » Hevi-Haul Red

Please contact us by phone or e-mail if you would like us to modify this design. Drawing is shown without welds.



CS-20K CONTAINS (4) MODEL CS-5, 2.5 TON CAPACITY EACH



HANDLE/WRENCH INCLUDED

PROPRIETARY AND CONFIDENTIAL
 THE INFORMATION CONTAINED IN THIS DRAWING IS THE SOLE PROPERTY OF HEVI-HAUL. ANY REPRODUCTION IN PART OR AS A WHOLE WITHOUT THE WRITTEN PERMISSION OF HEVI-HAUL IS PROHIBITED.



Hevi-Haul International
 N90 W14555 Commerce Drive
 Menomonee Falls, WI 53051
 Phone: 1-262-502-0333
 Fax: 1-262-502-0260
 E-Mail: sales@hevihaul.com

TOLERANCES UNLESS NOTED	DIMENSIONS ARE IN INCHES DO NOT SCALE DRAWING	DRAWN BY: G.L. Schneider	CHECKED BY:	DATE: 1/25/2017
BREAK SHARP EDGES	THIRD ANGLE PROJECTION	TITLE: CS-20K - Specification Sheet		
X.XX +/- 0.030 X.XXX +/- 0.005 ANGLE +/- 0.5° MACHINE 125		SCALE: 1:12	DRAWING NUMBER: CS-20K	REVISION: