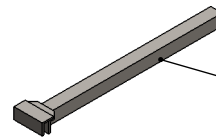
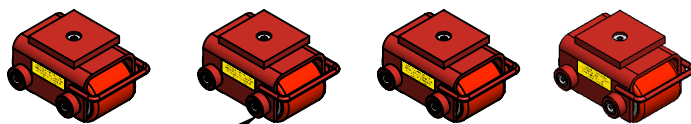




Model Number » CS-20K-P
Capacity » 10 Tons Per Kit or 2.5 Tons Each
Kit Includes » (1) Steel Box, (4) CS-5-P Skates and (1) Handle
Weight » 103 lbs
Paint » Hevi-Haul Red

Please contact us by phone or e-mail if you would like us to modify this design. Drawing is shown without welds.



HANDLE/WRENCH INCLUDED

CS-20K-P CONTAINS (4) MODEL CS-5-P, 2.5 TON CAPACITY EACH

PROPRIETARY AND CONFIDENTIAL THE INFORMATION CONTAINED IN THIS DRAWING IS THE SOLE PROPERTY OF HEVI-HAUL. ANY REPRODUCTION IN PART OR AS A WHOLE WITHOUT THE WRITTEN PERMISSION OF HEVI-HAUL IS PROHIBITED.		 <p>Hevi-Haul International N90 W14555 Commerce Drive Menomonee Falls, WI 53051 Phone: 1-262-502-0333 Fax: 1-262-502-0260 E-Mail: sales@hevihaul.com</p>	
TOLERANCES UNLESS NOTED	DIMENSIONS ARE IN INCHES DO NOT SCALE DRAWING	DRAWN BY: G.L. Schneider	CHECKED BY:
X.XX +/- 0.030	THIRD ANGLE PROJECTION	TITLE: CS-20K-P - Specification Sheet	
x.xxx +/- 0.005		SCALE: 1:12	DRAWING NUMBER: CS-20K-P
ANGLE +/- 0.5°	MACHINE 125		DATE: 1/25/2017
			REVISION: