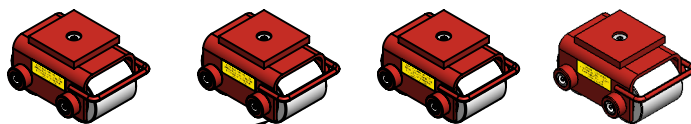
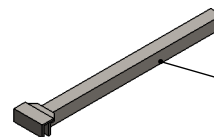


Model Number » CS-12K
Capacity » 6 Tons Per Kit or 1.5 Tons Each
Kit Includes » (1) Steel Box, (4) CS-3 Skates and (1) Handle
Weight » 127 lbs
Paint » Hevi-Haul Red


Please contact us by phone or e-mail if you would like us to modify this design. Drawing is shown without welds.



CS-12K CONTAINS (4) MODEL CS-3, 1.5 TON CAPACITY EACH



HANDLE/WRENCH INCLUDED

PROPRIETARY AND CONFIDENTIAL THE INFORMATION CONTAINED IN THIS DRAWING IS THE SOLE PROPERTY OF HEVI-HAUL. ANY REPRODUCTION IN PART OR AS A WHOLE WITHOUT THE WRITTEN PERMISSION OF HEVI-HAUL IS PROHIBITED.			 Hevi-Haul International N90 W14555 Commerce Drive Menomonee Falls, WI 53051 Phone: 1-262-502-0333 Fax: 1-262-502-0260 E-Mail: sales@hevihaul.com
TOLERANCES UNLESS NOTED X.XX +/- 0.030 X.XXX +/- 0.005 ANGLE +/- 0.5° MACHINE 125	DIMENSIONS ARE IN INCHES DO NOT SCALE DRAWING THIRD ANGLE PROJECTION	DRAWN BY: G.L. Schneider TITLE: CS-12K - Specification Sheet SCALE: 1:12	