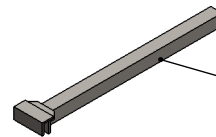
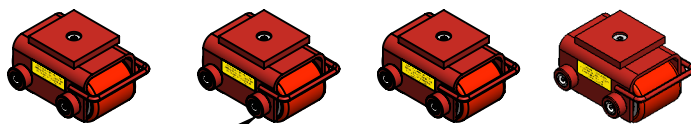



Model Number » CS-12K-P
Capacity » 6 Tons Per Kit or 1.5 Tons Each
Kit Includes » (1) Steel Box, (4) CS-3-P Skates and (1) Handle
Weight » 103 lbs
Paint » Hevi-Haul Red

Please contact us by phone or e-mail if you would like us to modify this design. Drawing is shown without welds.



HANDLE/WRENCH INCLUDED

CS-12K-P CONTAINS (4) MODEL CS-3-P, 1.5 TON CAPACITY EACH

PROPRIETARY AND CONFIDENTIAL THE INFORMATION CONTAINED IN THIS DRAWING IS THE SOLE PROPERTY OF HEVI-HAUL. ANY REPRODUCTION IN PART OR AS A WHOLE WITHOUT THE WRITTEN PERMISSION OF HEVI-HAUL IS PROHIBITED.				Hevi-Haul International N90 W14555 Commerce Drive Menomonee Falls, WI 53051 Phone: 1-262-502-0333 Fax: 1-262-502-0260 E-Mail: sales@hevihaul.com
TOLERANCES UNLESS NOTED X.XX +/- 0.030 X.XXX +/- 0.005 ANGLE +/- 0.5° MACHINE 125	DIMENSIONS ARE IN INCHES DO NOT SCALE DRAWING THIRD ANGLE PROJECTION	DRAWN BY: G.L. Schneider TITLE: CS-12K-P - Specification Sheet	CHECKED BY: DATE: 1/25/2017	REVISION:
SCALE: 1:12		DRAWING NUMBER: CS-12K-P		