

1.800.558.0577



SKATES



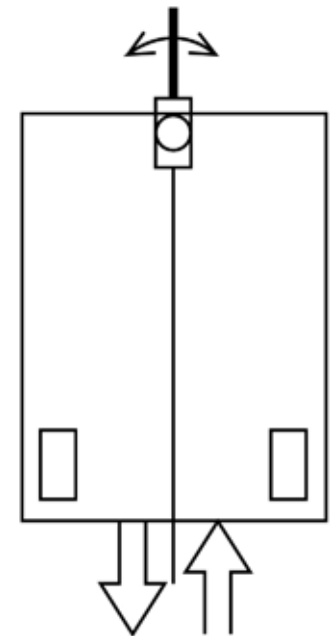
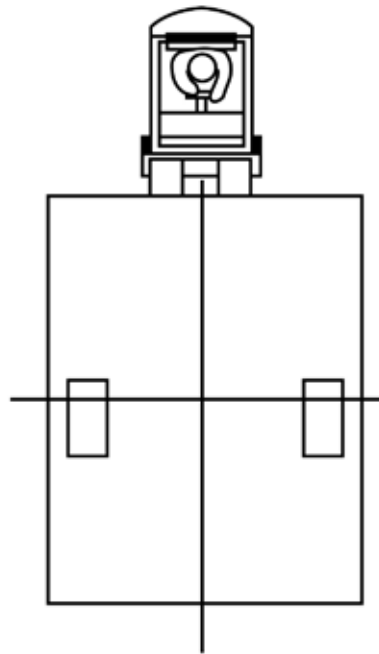
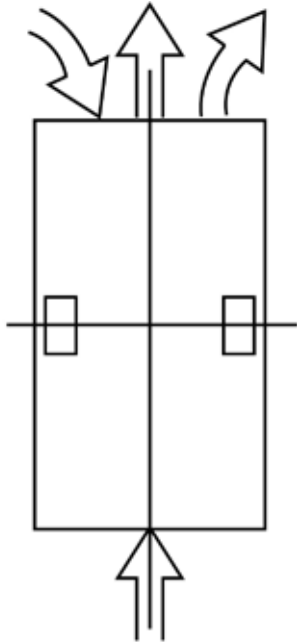
MAINTENANCE & USAGE GUIDE

COMMON MOVING METHODS WITH HEVI-HAUL SKATES

THE BELOW ILLUSTRATIONS SUGGEST COMMON MOVING METHODS FOR GENERAL MOVING SITUATIONS YOU MAY FACE. ADAPTATIONS AND COMBINATIONS OF THESE METHODS MAY BE NECESSARY FOR EACH INDIVIDUAL LOAD.*

USING TWO HEVI-HAUL SKATES

USING THREE HEVI-HAUL SKATES



METHOD 1

METHOD 2

METHOD 3

1. USE WITH LOADS LIGHT ENOUGH TO BE MOVED WITH MANPOWER. PLACE YOUR HEVI-HAUL RIGID TOP SKATES AT THE CENTER OF GRAVITY OF THE LOAD. THE LOAD MAY THEN BE PUSHED OR PULLED FROM EITHER END. TRAVELING IN A STRAIGHT LINE AND MAKING TURNS IS ACCOMPLISHED EASILY BY PUSHING THE LOAD IN THE DESIRED DIRECTION.

2. THIS METHOD ALLOWS MOVING HEAVY AND BULKY LOADS THAT ARE OUT OF THE CAPACITY RANGE OF MOST FORKLIFT TRUCKS. THIS IS AN ECONOMICAL WAY TO GREATLY INCREASE YOUR FORKLIFT TRUCK'S USEFULNESS AND VERSATILITY.

PLACE YOUR HEVI-HAUL RIGID TOP SKATES SLIGHTLY AHEAD OF THE CENTER OF GRAVITY, ALLOWING ONE END OF THE LOAD TO CONTACT THE FLOOR. USE YOUR FORKLIFT TO PICK UP THIS END TO PUSH AND STEER THE LOAD FOR FORWARD TRAVEL. THE FORKLIFT OPERATOR MUST ADJUST THE FORKS WHEN COMING UPON DIFFERENCES IN FLOOR LEVELS. RAISE THE FORKS WHEN STEPPING UP, AND LOWER THE FORKS WHEN STEPPING DOWN.

3. LOCATE TWO OF YOUR HEVI-HAUL RIGID TOP SKATES PARALLEL TO EACH OTHER AT ONE END OF THE LOAD. IF THE LOAD IS HEAVIER ON ONE END THAN THE OTHER, PLACE YOUR HEVI-HAUL RIGID TOP SKATES UNDER THE HEAVIER END OF THE LOAD.

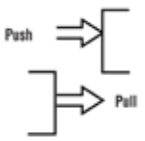
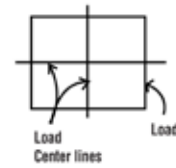
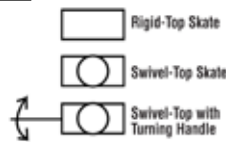
A HEVI-HAUL SWIVEL TOP SKATE CAN NOW BE PLACED AT THE OTHER END IN THE CENTER OF THE LOAD. YOU CAN PUSH OR PULL AT THE END THAT YOU'VE PLACED YOUR HEVI-HAUL RIGID TOP SKATES AND STEER THE LOAD USING THE HEVI-HAUL SWIVEL TOP SKATE WITH A TURNING HANDLE.

ROLLING RESISTANCE - COEFFICIENT OF FRICTION:

FORMULA: $LOAD \times .05 = FORCE \text{ REQUIRED TO MOVE}$

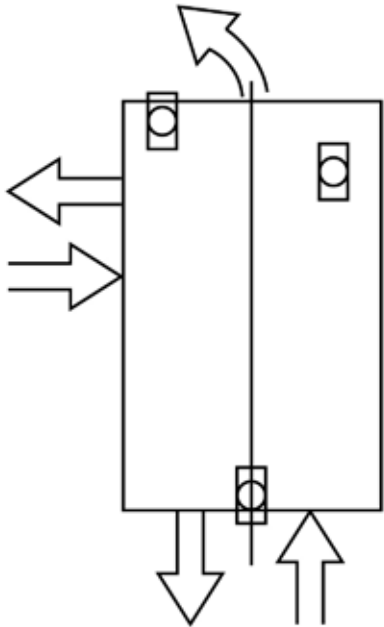
THIS FORMULA SHOULD BE USED ONLY TO APPROXIMATE THE FORCE REQUIRED TO MOVE THE LOAD. THE ACTUAL FORCE REQUIRED WILL DEPEND SPECIFICALLY ON THE CONDITIONS OF THE MOVE.

LEGEND

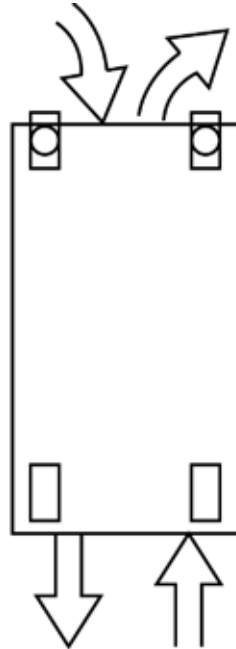


HEVI-HAUL SKATES

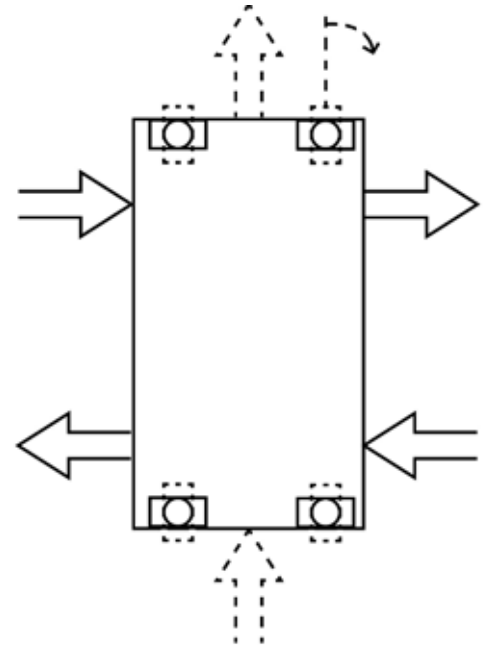
USING FOUR HEVI-HAUL SKATES



METHOD 4



METHOD 5



METHOD 6

4. THIS METHOD IS IDEAL FOR LOADS REQUIRING MAXIMUM TURNING FOR SPOTTING OPERATIONS. WITH HEVI-HAUL SWIVEL TOP SKATES PLACED AS SHOW, THE LOAD MAY BE PUSHED OR PULLED IN ANY DIRECTION BY SWIVELING WITH TURNING HANDLES.

5. TWO HEVI-HAUL RIGID TOP SKATES AND TWO HEVI-HAUL SWIVEL TOP SKATES ARE USED IN COMBINATION FOR VERY LARGE AND VERY HEAVY LOADS. STRAIGHT LINE TRAVEL AND TURNS ARE ACCOMPLISHED BY TURNING AND ALIGNING YOUR HEVI-HAUL SWIVEL TOP SKATES. ADJUSTING THE SWIVEL POSITION SHOULD BE DONE WITH THE LOAD STATIONARY. THE LOAD IS THEN PUSHED OR PULLED IN THE DESIRED DIRECTION WITH TURNING HANDLES

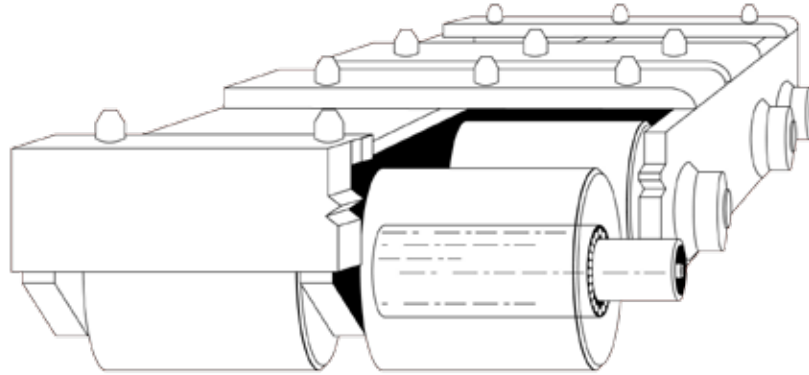
6. FOR USE WITH HEAVY LOADS REQUIRING FULL DIRECTIONAL CONTROL OF THE LOAD. POSITION THE LOAD ON FOUR HEVI-HAUL SWIVEL TOP SKATES TO ACHIEVE THE ABILITY TO UTILIZE STRIAIGHT LINE TRAVEL AND MAKE ALL TURNS.

BROADSIDE MOVEMENT IS ACCOMPLISHED BY SWIVELING YOUR HEVI-HAUL SKATES IN THE DESIRED DIRECTION WITH TURNING HANDLES.

CARE & PREVENTATIVE MAINTENANCE:

ALWAYS REMEMBER THAT LIKE ALL TOOLS, HEVI-HAUL SKATES MUST BE APPLIED TO A SPECIFIC TASK WITH GOOD JUDGEMENT BY THE USER(S). YOU SHOULD ALWAYS INSPECT YOUR HEVI-HAUL SKATES REGULARLY FOR ANY DAMAGE AND USE PREVENTATIVE MAINTENANCE. HEVI-HAUL RECOMMENDS GREASING OF AXLES BEFORE EACH USE. USING THE GREASE FITTING(S) ON EACH AXLE, LUBRICATE THE AXLES WITH 5 TO 6 PUMPS OF A GREASE GUN FILLED WITH GENERAL PURPOSE GREASE. SWIVEL ASSEMBLIES SHOULD ALSO BE GREASED REGULARLY.

HEVI-HAUL SKATES - ENGINEERED TO TAKE THE WEIGHT!



- **Low Profile** for maximum load clearance minimum load jacking
- **1" Diameter High Carbon Steel Axles** over the full length of each roller assures smooth operation
- **Durable Welded Frames**
- **Wide Roller Stances** help to bridge bridge cracks and holes in floors
- **Steel Cleats** for embedding into skids or blocking wood to assure alignment
- **Tempered Steel Needle Bearings** over the full length of each roller assures smooth operation
- **Easy Lube Grease Fittings** for minimum maintenance
- **Precision Bored Holes** provide a smooth bearing raceway
- **Steel & Polyurethane Coated Rollers** are interchangeable on Hevi-Haul skates. Swap out Steel Rollers used on moves over rough surfaces with Poly Rollers for maximum floor protection.



HEADQUARTERS:
N90 W14555 Commerce Drive
Menomonee Falls, WI 53051

MAILING:
PO Box 580
Menomonee Falls, WI 53052-0580

WWW.HEVIHAUL.COM

1.800.558.0577

E-Mail: sales@hevihaul.com

Phone: +1 262.502.0333 Fax: +1 262.502.0260



WARRANTY TERMS

Hevi-Haul warrants its products to be free of defects in materials and workmanship. Hevi-Haul makes no other warranties, expressed or implied, including no warranties of fitness for a particular purpose. Hevi-Haul's obligations under this warranty shall be limited to repair or replacement of the products in question or, at its sole option, refund of the purchase price. Hevi-Haul disclaims any liability for incidental or consequential damages, including liability for lost profits. This warranty shall be voided by any misuse or abuse of the product, or upon any modification of the products without written authorization. Any claims under this warranty must be made in writing within one year from date of delivery to the customer. Hevi-Haul's acceptance of any purchase order is conditioned upon customer's agreement to these warranty terms. No modification of these terms shall be effective against Hevi-Haul unless in writing and signed by an authorized representative of Hevi-Haul.

Standard payment terms are Net 30 Days with approved credit. F.O.B. Menomonee Falls, WI, 53051, U.S.A. Prices are subject to change without notice.
All agreements subject to strike, accidents, and other causes beyond our control. HHMAINTGUIDEPRINT.001 © 2012 Hevi-Haul Litho, U.S.A.