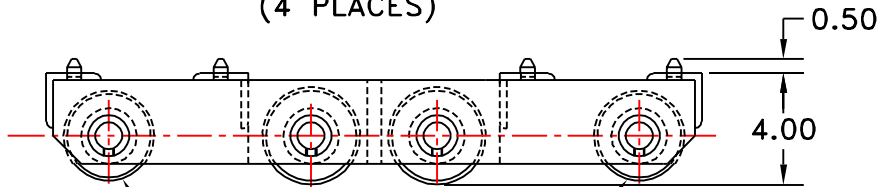
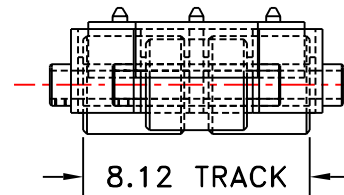


3.5" ϕ CENTER ROLLERS
(4 PLACES)



3.25" ϕ END ROLLERS
(2 PLACES)



8.12 TRACK

HEVI-HAUL SKATE

MODEL: UM-HD-15
NON-TILT TYPE UTILITY SKATE

CAPACITY: 7.5 TONS
(STEEL ROLLERS)
UNIT WEIGHT: 81 LBS.
COLOR: HEVI-HAUL RED

ROLLER OPTIONS:

POLY (POLYURETHANE) COATED ROLLERS
CAPACITY: 7.5 TONS
UNIT WEIGHT: 59.0 LBS.

NYLON ROLLERS
(BEARINGS WITH SEALS)
CAPACITY: 7.5 TONS
UNIT WEIGHT: 45.5 LBS.

OPTIONAL EQUIPMENT:
W/O CLEATS
GUIDE ROLLERS



MENOMONEE FALLS, WISCONSIN U.S.A.
PHONE: 800-558-0577
262-502-0333
FAX: 262-502-0260
WEB SITE: WWW.HEVIHAUL.COM

THIS DRAWING IS THE PROPERTY OF HEVI-HAUL INTERNATIONAL, LTD. ALL THE INFORMATION THEREON IS CONFIDENTIAL AND MUST NOT BE MADE PUBLIC, NOR COPIED, NOR USED TO THE DISADVANTAGE OF HEVI-HAUL INTERNATIONAL, LTD., AND IS SUBJECT TO RETURN ON DEMAND.

REV. 2001 DATE: 01-09-01 DRAWN BY: J.P. WARREN

SPEC. SHEET MODEL

UM-HD-15