

MOVE ANYTHING ON HEVI-HAUL SKATES... MACHINE TOOLS,

GENERATORS, AEROSPACE COMPONENTS, ENGINES, BOILERS, CASTINGS & MORE!

HOUSES & BUILDINGS, LIGHTHOUSES, TRANSFORMERS, SHIPS, POWER PLANTS,



1-800-558-0577



SKATES



DAM COMPONENTS, OFF SHORE OIL PLATFORMS, BRIDGES,

Hevi-Haul Standard Skates

Ideal for smaller moves and material handling. Lightweight and easy to position and carry. *Easily equipped with guide rollers and brackets for use with I-beams.*

Model ST-1012

Capacity 6 tons (5443 kg) per skate
Length 15 3/4" (38.7 cm)
Width 10 1/2" (26.7 cm)
Height 4" (10.2 cm)
Weight 58 lbs. (27.2 kg)

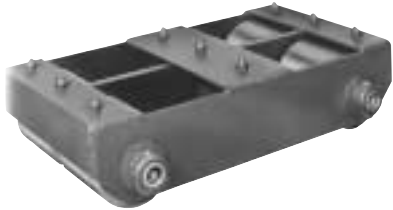
Model ST-1040

Capacity 20 tons (18144 kg) per skate
Length 16" (40.6 cm)
Width 11 3/4" (29.8 cm)
Height 4" (10.2 cm)
Weight 81 lbs. (236.7 kg)

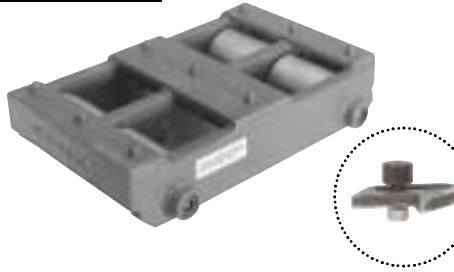
Model ST-1060

Capacity 30 tons (27216 kg) per skate
Length 16" (40.6 cm)
Width 11 3/4" (29.8 cm)
Height 4" (10.2 cm)
Weight 104 lbs. (47.2 kg)

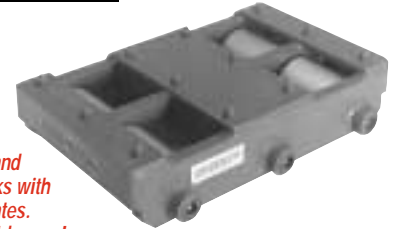
Model ST-1012



Model ST-1040



Model ST-1060



Guide roller and bracket works with all rigid skates. For use with I-beams!



Employee Pride...

Excellent Service...

Quality Products...

Customer Satisfaction.

Model TD-35 Timber Skate

Capacity 3 tons (2722 kg) per skate
Length 12 1/4" (31.1 cm)
Width 10 1/2" (26.7 cm)
Height 4" (10.2 cm)
Weight 35 lbs. (15.9 kg)

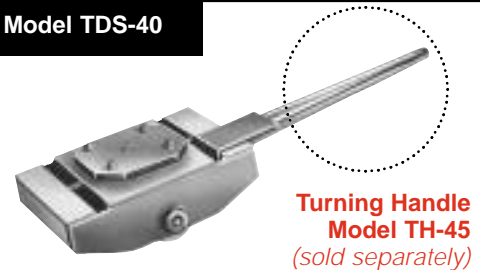
Model TDS-40 Swivel Top Timber Skate

Capacity 3 tons (5443 kg) per skate
Length 12 1/4" (31.1 cm)
Width 10 1/2" (26.7 cm)
Height 5" (12.7 cm)
Weight 45 lbs. (20.4 kg)
Teams up with the TD-35 for maneuverability

Model TD-35



Model TDS-40



**Turning Handle
Model TH-45**
(sold separately)

See page 5 for other turning handle options.

Model JD-3 Junior Skate

Capacity 1.5 tons (1362 kg) per skate
Length 8 1/2" (21.6 cm)
Width 6" (15.3 cm)
Height 4" (10.2 cm)
Weight 15 lbs. (6.8 kg)

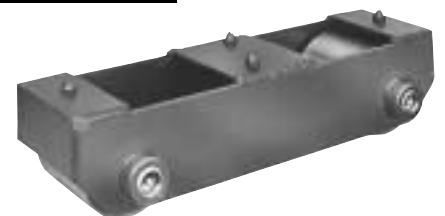
Model ST-5

Capacity 2.5 tons (2268 kg) per skate
Length 15 1/4" (38.7 cm)
Width 6 1/8" (15.6 cm)
Height 4" (10.2 cm)
Weight 30 lbs. (13.6 kg)

Model JD-3



Model ST-5



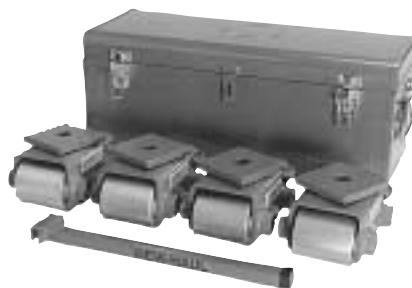
Hevi-Haul Compact Swivel Skates

Smooth top design with drilled and tapped holes allows for easy, permanent installation on frequently moved equipment.



Model CS-3

Higher capacity kits available.
Consult factory for details.



Model CS-12K



Model CS-25

Model CS-3

The best high capacity compact skate on the market. Perfect for every day machine tool moving. Swivel top can be removed, allowing for easy permanent installation under heavy equipment.

Capacity 1.5 tons (1361 kg) per skate

Length 8 1/8" (20.6 cm)

Width 6" (15.2 cm)

Height 4 1/2" (11.4 cm)

Weight 30 lbs. (13.6 kg)

Model CS-12K

Includes 4 CS-3 swivel skates, a 16 1/2" steering handle and a steel storage box.

Capacity 6 tons (5443 kg) per kit

Length 24 3/8" (61.7 cm)

Width 9 1/2" (24.1 cm)

Height 9 1/2" (24.1 cm)

Weight 143 lbs. (65.9 kg)

Model CS-20K

Physical size and appearance of CS-12K and CS-20K are identical. High strength alloy steel axles are used in model CS-20K.

Model CS-25

Oscillating swivel top allows skate to tilt with floor irregularities. Side bar extension assists in turns.

Capacity 12.5 tons (11340 kg) per skate

Length 9" (22.97 cm)

Width 6 3/4" (17.1 cm)**

Height 5 1/2" (14 cm)

Weight 48 lbs. (21.8 kg)

** Width 12" (30.5 cm) over turning bar.

Hevi-Haul Compact Skate



Spring Loaded
Carrying Handle

Model X-30

Polyurethane Coated & Nylon Rollers

For moves on wooden or tile floors, available as option on all models of Hevi-Haul Skates. Recommended only where floor protection is required.



Model POLY-R



Model NYLON-N

Model X-30

Features a compact, solid top design and built-in carrying handle. Load is distributed over four rollers.

Capacity 15 tons (13608 kg) per skate

Length 15 3/4" (40 cm)

Width 10 1/2" (26.7 cm)

Height 4" (10.2 cm)

Weight 66 lbs. (29.9 kg)

Model Suffix POLY-R

Diameter 3 1/4" (8.3 cm)

Weight 6 lbs. (2.7 kg)

Diameter 3 1/2" (8.9 cm)

Weight 6 1/2 lbs. (3 kg)



Model Suffix NYLON-N

Diameter 3 1/4" (8.3 cm)

Weight 6 lbs. (2.7 kg)

Diameter 3 1/2" (8.9 cm)

Weight 6 1/2 lbs. (3 kg)

Consult factory for skate capacities when using polyurethane or nylon rollers.

1-800-558-0577

www.hevihaul.com



Hevi-Haul Heavy-Duty Skates

Rugged fabricated frames with two rows of tandem rollers for maximum stability. Excellent for the really tough assignments - used by professional machine tool movers and riggers. *Easily equipped with guide rollers and brackets for use with I-beams.*

Skates have larger center support rollers (3 1/2" diameter) with smaller rollers (3 1/4" diameter) on each end for easier moving over rough floors, up ramps, over welds, etc. Skates can be equipped with all the same size rollers to maximize load distribution at no extra charge. No change in skate capacity.

Skates with higher capacities are available.

Model HD-15

Capacity 10 tons (9072 kg) per skate
1/4" (.64 cm) steel plate frame construction
Length 27 3/4" (69.9 cm)
Width 10 1/2" (26.7 cm)
Height 4" (10.2 cm)
Weight 110 lbs. (49.9 kg)

Model HD-15

Model SD-50

Model BB-100

Model SD-50

Capacity 25 tons (22680 kg) per skate
1/2" (1.27 cm) and 3/4" (1.9 cm) steel plate frame construction
Length 28" (71.1 cm)
Width 11 1/4" (28.6 cm)
Height 4" (10.2 cm)
Weight 140 lbs. (63.5 kg)

Model BB-100 - Block Buster

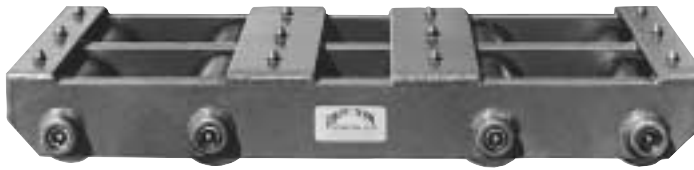
Capacity 50 tons (45360 kg) per skate
3/4" (1.9 cm) and 1" (2.5 cm) steel plate frame construction
Length 28" (71.1 cm)
Width 12" (30.5 cm)
Height 4" (10.2 cm)
Weight 150 lbs. (65.8 kg)

Model TDM-200

Capacity 100 tons (90720 kg) per skate
3/4" (1.9 cm) and 1" (2.5 cm) steel plate frame construction - 14 rollers
Length 29 3/4" (75.6 cm)
Width 12" (30.5 cm)
Height 4 3/4" (10.2 cm)
Weight 229 lbs. (103.9 kg)
The most rugged skate on the market.



Guide roller and bracket works with all rigid skates. For use with I-beams!



Model SD-50 shown here.

Model TDM-200



Hevi-Haul Non-Tilt Utility Skates

Combines the stability and increased load capacities of heavy-duty models with improved climbing, leading, and following inherent to tilt-type skates.

Model UM-HD-15

Capacity 7.5 tons (6804 kg) per skate
1/4" (.64 cm) steel plate frame
Length 23 1/2" (59.7 cm)
Width 10 1/2" (26.7 cm)
Height 4" (10.2 cm)
Weight 81 lbs. (36.7 kg)

Model UMS-HD-15 Swivel Top

Capacity 7.5 tons (6804 kg) per skate
1/4" (.64 cm) steel plate frame
Length 23 1/2" (59.7 cm)
Width 10 1/2" (26.7 cm)
Height 5" (12.7 cm)
Weight 95 lbs. (43.1 kg)

Model UM-HD-50

Capacity 25 tons (22680 kg) per skate
1/2" (1.27 cm) steel plate frame
Length 23 1/2" (59.7 cm)
Width 11" (27.9 cm)
Height 4" (10.2 cm)
Weight 97 lbs. (44 kg)

Model UMS-HD-50 Swivel Top

Capacity 25 tons (22680 kg) per skate
1/2" (1.27 cm) steel plate frame
Length 23 1/2" (59.7 cm)
Width 11" (27.9 cm)
Height 5" (12.7 cm)
Weight 112 lbs. (50.8 kg)

Model UM-HD-75

Capacity 37.5 tons (34035 kg) per skate.
Physical size and appearance of UM-HD-50 and UM-HD-75 are identical. High strength alloy steel axles are used in UM-HD-75

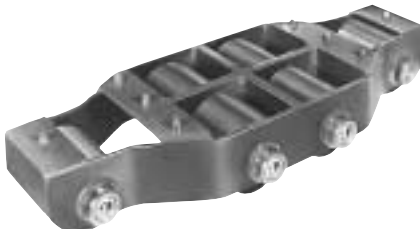
Model UMS-HD-75 Swivel Top

Capacity 37.5 tons (34035 kg) per skate.
Physical size and appearance of UMS-HD-50 and UMS-HD-75 are identical. High strength alloy steel axles are used in UMS-HD-75

Model UM-HD-

Model UM-HD-

Model UM-HD-



Model UMS-HD-15

Model UMS-HD-50

Model UMS-HD-75



Hevi-Haul Tilt-Type Utility Skates

Exceptional maneuverability because each skate can be turned on its own radius. Skates have two larger center support rollers with one smaller roller on each end. This provides a tilting axis for easier moving over rough floors, up ramps, over welds, etc. *Use turning handle with swivel skates for better steering.*



Model UM-8



Model UMS-9

Model UM-8 Utility Model

Capacity 4 tons (3629 kg) per skate
 1/4" (.64 cm) steel plate frame
Length 19" (48.3 cm)
Width 10 1/2" (26.7 cm)
Height 4" (10.2 cm)
Weight 55 lbs. (25.1 kg)

Model UMS-9 Utility Swivel Top

Capacity 4 tons (3629 kg) per skate
 1/4" (.64 cm) steel plate frame
Length 19" (48.3 cm)
Width 10 1/2" (26.7 cm)
Height 5" (12.7 cm)
Weight 66 lbs. (29.9 kg)

Available with or without cleats on swivel plate. Without cleats, plate may be drilled or tapped for bolts or lugs.

Hevi-Haul Turning Handle and Bracket

Hevi-Haul's rugged Swivel Tow Handle includes both the handle (STH) and bracket assembly (STB). Turning handles can be used on all Hevi-Haul Swivel Skate models.

Model STH, Model STB

Swivel Tow Handle (STH). Swivel Tow Bracket (STB). *Must be used together*

Length 48" (121.92 cm)
Weight 14 lbs. (6.4 kg)



Model STH, Model STB



Model UM-HD-20

Model UM-HD-30



Model UMS-HD-20

Model UMS-HD-30

Model UM-HD-20 Hevi-Utility Model

Capacity 10 tons (9072 kg) per skate
Length 19" (48.3 cm)
Width 11" (27.9 cm)
Height 4" (10.2 cm)
Weight 70 lbs. (30.6 kg)

Model UM-HD-30 Hevi-Utility Model

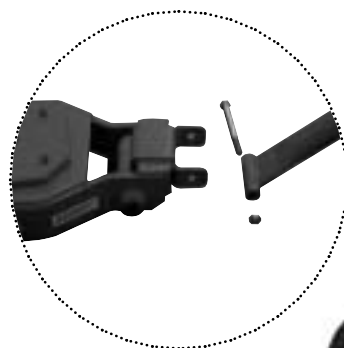
Capacity 15 tons (13608 kg) per skate.
 Physical size and appearance of UM-HD-20 and UM-HD-30 are identical. High strength alloy steel axles are used in UM-HD-30.
 1/2" (1.27 cm) steel plate frame.

Model UMS-HD-20 Hevi-Utility Swivel Top

Capacity 10 tons (9072 kg) per skate
Length 19" (48.3 cm)
Width 11" (27.9 cm)
Height 5" (12.7 cm)
Weight 78 lbs. (35.4 kg)

Model UMS-HD-30 Hevi-Utility Swivel Top

Capacity 15 tons (13608 kg) per skate.
 Physical size and appearance of UMS-HD-20 and UMS-HD-30 are identical. High strength alloy steel axles are used in UMS-HD-30.
 1/2" (1.27 cm) steel plate frame.



For optimal maneuverability, use swivel skate and handle in conjunction with rigid skates.

Hevi-Haul House Mover Skates

Model HM-25

Model HM-50

Model HM-100



Model HM-50 shown here.

Features:

- Rollers above and below with free rotation between upper and lower assemblies provide for precise positioning of load in any direction without stopping to reset.
- Eight cam followers, four on top, four on bottom, adjust to upper and lower beam requirements.
- Top and bottom assemblies can be separated for easy handling, and for use as single skates.
- Heavy duty handles provided on both upper and lower assemblies for easier lifting.
- Loads roll easily on large bearing supported rollers with grease fittings for easy lubrications.

Model HM-25

Capacity 25 tons (22680 kg)
Length 19 1/4" (48.9 cm)
Width 17 7/8" (45.4 cm)
Height (over rollers) 8 1/4" (21 cm)
Height (overall) 10 1/16" (25.6 cm)
Weight 278 lbs. (126 kg)
Guide Roller Width 5 5/8" - 13 5/8"
 (14.3 - 34.6 cm)

Model HM-50

Capacity 50 tons (45360 kg)
Length 19 1/4" (48.9 cm)
Width 20 1/2" (52.14 cm)
Height (over rollers) 8 1/4" (21 cm)
Height (overall) 10 1/16" (25.6 cm)
Weight 318 lbs. (144 kg)
Guide Roller Width 8 1/4" - 16 1/4"
 (21 - 41.3 cm)

Model HM-100

Capacity 100 tons (90720 kg)
Length 28 1/4" (71.8 cm)
Width 20 1/2" (52.14 cm)
Height (over rollers) 8 3/4" (22.2 cm)
Height (overall) 10 9/16" (26.8 cm)
Weight 590 lbs. (268 kg)
Guide Roller Width 8 1/4" - 16 1/4"
 (21 - 41.3 cm)

Hevi-Haul Tilt Roller Platform

Model PL-44



Model PL-44 Roller Platform Skate

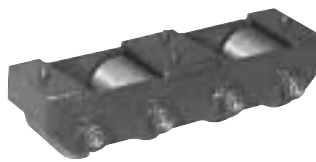
Versatile material handler features a planed hardwood deck and tilt-roller design for maximum maneuverability. Ideal for moving pedestal base machines, paper rolls, drums, etc.

Capacity 8 tons (3629 kg) each skate
Length 40 1/2" (102.9 cm)
Width 22 1/2" (57.2 cm)
Height 5" (12.7 cm)
Weight 185 lbs. (83.9 kg)

Hevi-Haul Slim Skates

Based on our Hevi-Duty Skate design, except these models have a single row of tandem rollers. Use where other high capacity skates won't fit. *Excellent for use in channels.*

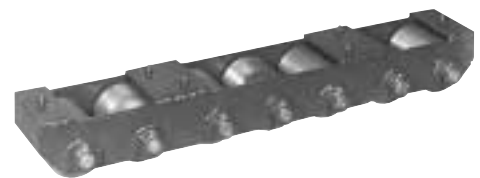
Model TDM-4



Model TDM-4 Tandem-4 Skate

Capacity 7.5 tons (6804 kg) per skate, 4 rollers
Length 15 1/4" (38.7 cm)
Width 6 1/2" (16.5 cm)
Height 4" (10.2 cm)
Weight 62 lbs. (28.1 kg)

Model TDM-7



Model TDM-7 Tandem-7 Skate

Capacity 12.5 tons (11340 kg) per skate, 7 rollers
Length 29 3/4" (75.6 cm)
Width 6 1/2" (16.5 cm)
Height 4" (10.2 cm)
Weight 106 lbs. (48.2 kg)



Hevi-Haul Beam Roller Skates

Slide beams effortlessly with these easy-to-handle skates. Their lighter weight allows them to be raised overhead easily. Designed for house moving, but versatile enough for many applications.

Model BR-3

Capacity 9 tons (8165 kg) each
 1/4" (.64 cm) x 1 3/4" (4.45 cm)
 steel angle frame construction - 3 rollers
Length 15 1/2" (39.4 cm)
Width 7 3/4" (19.7 cm)
Height 4" (10.2 cm)
Weight 32 lbs. (14.6 kg)

Model BR-4***

Capacity 12 tons (10886 kg) each
 1/4" (.64 cm) x 1 3/4" (4.45 cm)
 steel angle frame construction - 4 rollers
Length 20 3/4" (52.7 cm)
Width 8" (20.4 cm)
Height 4" (10.2 cm)
Weight 45 lbs. (20.5 kg)

Model BR-4-SR

Capacity 12 tons (10886 kg) each
 1/4" (.64 cm) x 1 3/4" (4.45 cm)
 steel angle frame construction - 4 rollers
Length 16 1/2" (42 cm)
Width 10 5/8" (27 cm)
Height 3 1/4" (8.3 cm)
Weight 45 1/2 lbs. (20.7 kg)

*** To convert Model BR-4 to a 4 roller skate configuration, order Part # BR-4-SR (side rails).



Model BR-3



Model BR-4

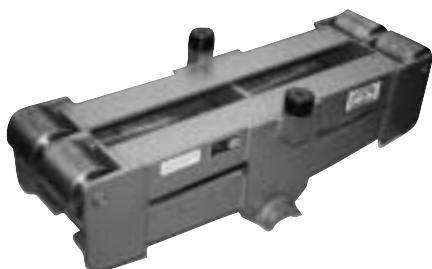


Model BR-4-SR

Hevi-Haul Custom Skates

Hevi-Haul engineers have the ability to design and produce custom skates for any of your special applications.

Our dedicated engineering staff works closely with you to find creative solutions to your load-moving challenges. We draw on over 25 years of engineering experience as we quote to meet your specific needs. Our support staff keeps the lines of communication open from beginning to end -- and beyond.



Hevi-Haul Skates...Engineered To Take The Weight

Durable Welded Frame

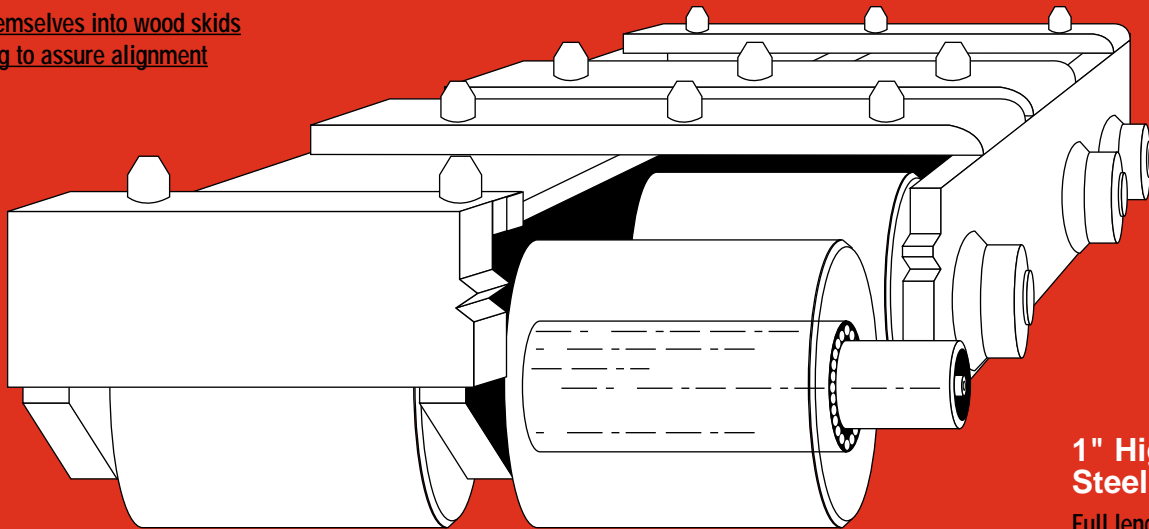
Low Profile

Maximum load clearance

Minimum load jacking

Steel Cleats

Embed themselves into wood skids or blocking to assure alignment



Easi-Lube Greasing

Minimum maintenance

1" High-Carbon Steel Axles

Full length of each roller assures smooth operation

3 1/2" or 3 1/4" Diameter Rollers

Easy rolling and easy on floors

Precision Machine Bore

Provides smooth bearing raceway

15 Tempered Steel Needle Bearings

Full length of each roller assures smooth operation

Wide Roller Stance

Bridges cracks and holes in floors



N90 W14555 Commerce Dr.
PO Box 580 (53052)
Menomonee Falls, WI 53051

Phone: 262-502-0333
Fax: 262-502-0260

Visit us at our Website:
www.hevihaul.com



1-800-558-0577

www.hevihaul.com

Warranty Terms

Hevi-Haul warrants its products to be free of defects in materials or workmanship. Hevi-Haul makes no other warranties, expressed or implied, including no warranties of fitness for particular purpose. Hevi-Haul's obligations under this warranty shall be limited to repair or replacement of the products in question or, at its sole option,

refund of the purchase price. Hevi-Haul disclaims any liability for incidental or consequential damages, including liability for lost profits. This warranty shall be voided by any misuse or abuse of the product, or upon any modification of the products without Hevi-Haul's prior expressed written authorization. Any claims under this warranty must be made,

in writing, within one year from date of delivery to the customer. Hevi-Haul's acceptance of this order is conditioned upon customer's agreement to these warranty terms. No modification of these terms shall be effective against Hevi-Haul unless in writing and signed by an authorized representative of Hevi-Haul.