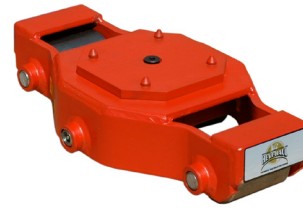


# PARTS BREAKDOWN SHEET



## PARTS

	DESCRIPTION	PART NUMBER	QUANTITY
AXLES	11" HARDENED AXLE	HA-01100	1
	6 1/2" HARDENED AXLE	HA-00650	2
BEARING SETS	STANDARD BEARING SET	H-00SBS	4
WASHERS	STANDARD THRUST WASHER	H-000SW	8
SET SCREWS	STANDARD CONE POINT SET SCREW	H-00CPS	3
BOSSSES	STANDARD BOSS - DRILLED & TAPPED	H-00BDT	3
	STANDARD BOSS - NON-DRILLED	H-00BND	3
SWIVEL PLATES	SWIVEL PLATE - LARGE	H-00LSP	1
FRICITION PLATES	FRICITION PLATE - LARGE	H-00LFP	1
CAP SCREWS	FLAT HEAD SOCKET CAP SCREW	H-FCS-00100	1
CLEATS	STANDARD CLEAT	H-000SC	4



## ROLLERS

MODEL	DESCRIPTION	PART NUMBER	CAPACITY	QUANTITY
UMS-HD-30	3 1/4" STEEL ROLLERS	SR-00325	10 Ton	2
	3 1/2" STEEL ROLLERS	SR-00350		2
UMS-HD-30/P	3 1/4" POLYURETHANE ROLLERS	PR-00325	10 Ton	2
	3 1/2" POLYURETHANE ROLLERS	PR-00350		2
UMS-HD-30/N	3 1/4" NYLON ROLLERS	NR-00325	4 Ton	2
	3 1/2" NYLON ROLLERS	NR-00350		2

MODELS: UMS-HD-30 • UMS-HD-30/P • UMS-HD-30/N