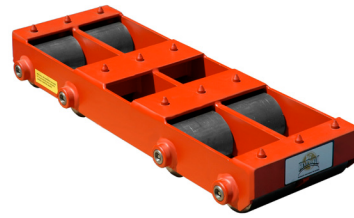


# PARTS BREAKDOWN SHEET



## PARTS

	DESCRIPTION	PART NUMBER	QUANTITY
AXLES	10 1/2" STANDARD AXLE	SA-01050	4
BEARING SETS	STANDARD BEARING SET	H-00SBS	8
WASHERS	STANDARD THRUST WASHER	H-000SW	16
SET SCREWS	STANDARD CONE POINT SET SCREW	H-00CPS	4
BOSSSES	STANDARD BOSS - DRILLED & TAPPED	H-00BDT	4
	STANDARD BOSS - NON-DRILLED	H-00BND	4
SWIVEL PLATES			
FRICITION PLATES			
CAP SCREWS			
CLEATS	STANDARD CLEAT	H-000SC	12



## ROLLERS

MODEL	DESCRIPTION	PART NUMBER	CAPACITY	QUANTITY
HD-15	3 1/4" STEEL ROLLERS	SR-00325	10 Ton	4
	3 1/2" STEEL ROLLERS	SR-00350		4
HD-15/P	3 1/4" POLYURETHANE ROLLERS	PR-00325	10 Ton	4
	3 1/2" POLYURETHANE ROLLERS	PR-00350		4
HD-15/N	3 1/4" NYLON ROLLERS	NR-00325	8 Ton	4
	3 1/2" NYLON ROLLERS	NR-00350		4

MODELS: HD-15 • HD-15/P • HD-15/N